

42Z-METER TRUCK-MOUNTED SPECIFICATIONS

Length	37' 5"	(11.41m)
Width	8' 2"	(2.50m)
Height	12' 8"	(3.87m)
Wheelbase	250"	(6,350mm)
Front axle weight	29,991 lbs	(13,604kg)
Rear axle weight	36,274 lbs	(16,454kg)
Approx total weight	66,265 lbs	(30,058kg)

Based on Model MACK MRU 613 with .16H pump cell.

Weights are approximate and include pump, boom, truck, driver and some fuel. Varies with options selected. Dimensions will vary with different truck makes, models and specifications.

BOOM SPECIFICATIONS | Z-FOLD DESIGN

Height & Reach

Vertical reach	136' 6"	(41.60m)
Horizontal reach	122' 5"	(37.30m)
Reach from front of truck*	113' 2"	(34.50m)
Reach depth	101' 8"	(31.00m)
Unfolding height	28' 3"	(8.60m)

5-Section Boom

1st section articulation	90°	
2nd section articulation	180°	
3rd section articulation	180°	
4th section articulation	246°	
5th section articulation	235°	
1st section length	24' 11"	(7.60m)
2nd section length	21' 0"	(6.40m)
3rd section length	23' 7"	(7.20m)
4th section length	26' 7"	(8.10m)
5th section length	27' 3"	(8.30m)

General Specs

Pipeline Size (ID) metric ends	5"	(125mm)
Rotation	365°	
End hose — length	10' 0"	(3.00m)
End hose — diameter	5"	(125mm)
Outrigger spread L - R — front	24' 7"	(7.50m)
hydraulically extend out & down		
Outrigger spread L - R — rear	25' 11"	(7.90m)
hydraulically swing out & extend down		

PUMP SPECIFICATIONS

42Z.16H

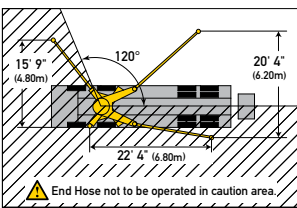
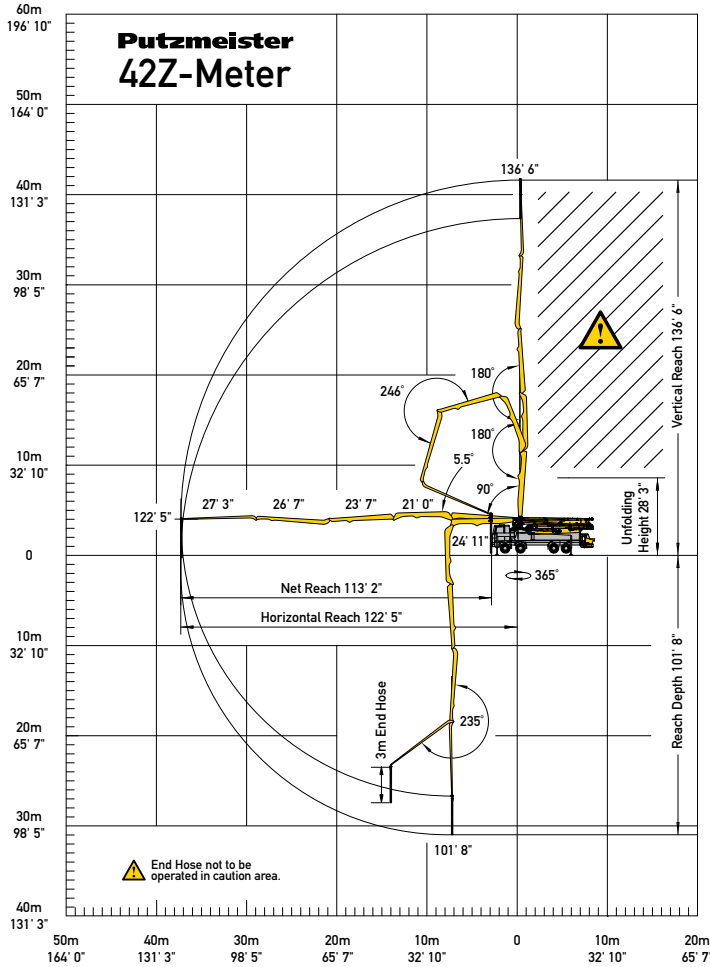
42Z.18H LS

Output — rod side	210 yd ³ /hr (160m ³ /hr)	—
— piston side	141 yd ³ /hr (108m ³ /hr)	238 yd ³ /hr (182m ³ /hr)
Pressure — rod side	1,233 psi (85 bar)	—
— piston side	1,885 psi (130 bar)*	1,233 psi (85 bar)
Material cylinder diameter	9" (230mm)	10" (250mm)
Stroke length	83" (2,100mm)	83" (2,100mm)
Max strokes per minute — rod side	31	—
— piston side	21	29
Volume control	0-Full	0-Full
Vibrator	Standard	Standard
Hard-chromed material cylinders	Standard	Standard
Hydraulic system	Free Flow	Free Flow
Hydraulic system pressure	5,075 psi (350 bar)	5,075 psi (350 bar)
Differential cylinder diameter	5.5" (140mm)	5.5" (140mm)
Rod diameter	3.1" (80mm)	3.1" (80mm)
Maximum size aggregate	2.5" (63mm)	2.5" (63mm)
Water tank— pedestal	185 gal (700L)	185 gal (700L)

Maximum theoretical values listed.

* Applies to units mounted on PMA stock truck — MACK MRU 613

• Standard delivery line system rated at max line pressure of 1,233 psi (85 bar)



With One-Sided Support (OSS) 120°

